

Edge-core

Quick Installation Guide

EWS5204

Wireless LAN Controller

Copyright Notice

This document is protected by USA copyright laws and other laws and is the property of Edgecore Networks Corporation. You may not copy, reproduce, distribute, publish, display, perform, or modify any part of this publication in any form or by any means without prior written permission from Edgecore Networks Corporation. You may not alter or remove any copyright or other notice from copies of the content. All other brand and product names are claimed or registered marks of their respective companies or organizations.

All rights reserved.

FCC Caution

This equipment has been tested and proven to comply with the limits for a class A digital device, pursuant to part 15 of the FCC Rules. These limits are designed to provide reasonable protection against harmful interference in a residential installation. This equipment generates, uses and can radiate radio frequency energy and, if not installed and used in accordance with the instructions, may cause harmful interference to radio communications. However, there is no guarantee that interference will not occur in a particular installation.

CE Caution

The device has been tested and passed the requirements of the following standards, and hence fulfills the EMC and safety requirements within the CE marking requirement.

- ▶ EMC: EN 55032:2012 + AC:2013 Class A, EN 61000-3-2:2014 Class A,
EN 61000-3-3:2013 including the followings:
 - EN 61000-4-2, EN 61000-4-3, EN 61000-4-4,
 - EN 61000-4-5, EN 61000-4-6, EN 61000-4-8, EN 61000-4-11

Safety: EN 60950-1: 2006 + A11:2009 + A1:2010 + A12:2011 + A2:2013

Preface

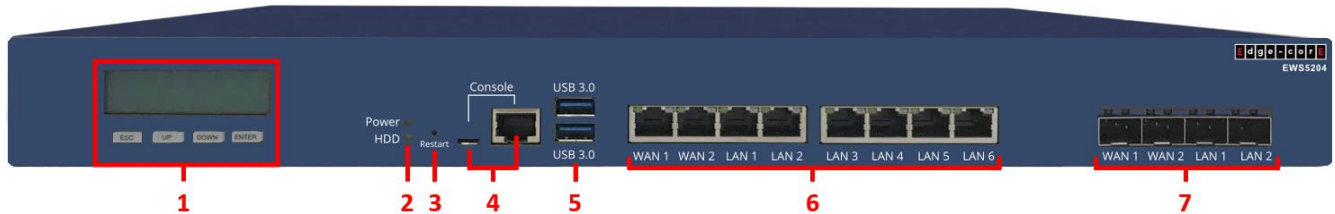
This Quick Installation Guide provides instructions on how to install the EWS5204 and to get the network up and running with basic configurations.

Package Contents

1. EWS5204 x 1
2. Quick Installation Guide (QIG) x 1
3. Console Cable x 1
4. Power Cord x 1

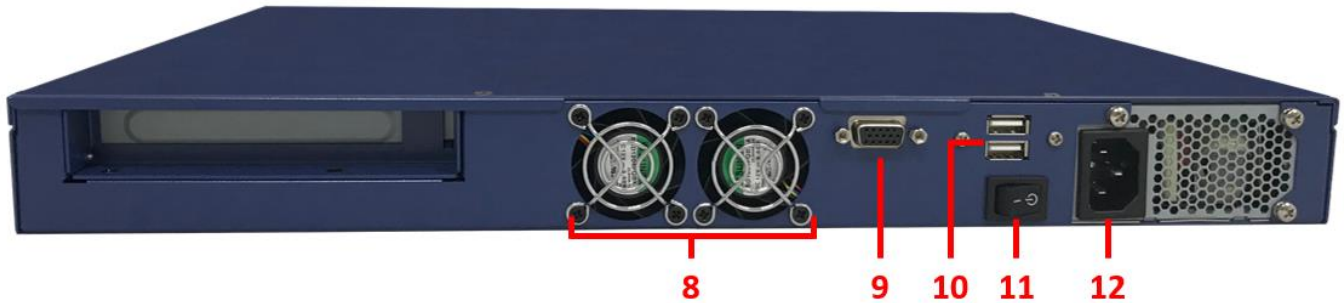
System Overview

Front Panel



1. **LCD Panel:** This panel allows administrators to view system information such as network interfaces through the navigation buttons (ESC, UP, DOWN, and ENTER).
2. **LED Indicators:**
 - **Power:** Lights up when power supply is on.
 - **HDD:** Hard drive activity light.
3. **Restart:** To restart the system, press and hold the button for 5 seconds and release the button.
4. **Console:** Ports (USB Type-C and RJ45) for connection to the Console Interface of the controller. Use a terminal emulation program such as Microsoft's Hyper Terminal to access the configuration console.
5. **USB 3.0:** USB ports reserved for future use.
6. **RJ45 Ports:**
 - **WAN1, WAN2:** RJ45 ports (10/100/1000 Base-T) for the uplink Ethernet connection. It is the default port that can pass all traffic to an uplink device, such as the xDSL modem / router.
 - **LAN1 – LAN6:** RJ45 ports (10/100/1000 Base-T) for the downlink Ethernet connection. Downlink devices such as switches, APs, and client PCs can be attached here.
7. **SFP Ports:** Ports to insert Small Form-factor Pluggable (SFP) transceiver modules
 - **WAN1, WAN2:** For the uplink connection via a fiber optic cable.
 - **LAN1, LAN2:** For the downlink connection via a fiber optic cable.

Rear Panel



8. **Device Cooling Fan:** Do not block the cooling fans and leave enough open space for ventilation.
9. **VGA Connector:** For connecting to a VGA monitor if needed.
10. **USB Ports:** Reserved for future use.
11. **Power Switch:** For powering the device On/Off.
12. **Power Supply Socket:** For connecting the power cord to the built-in power supply.

Hardware Installation

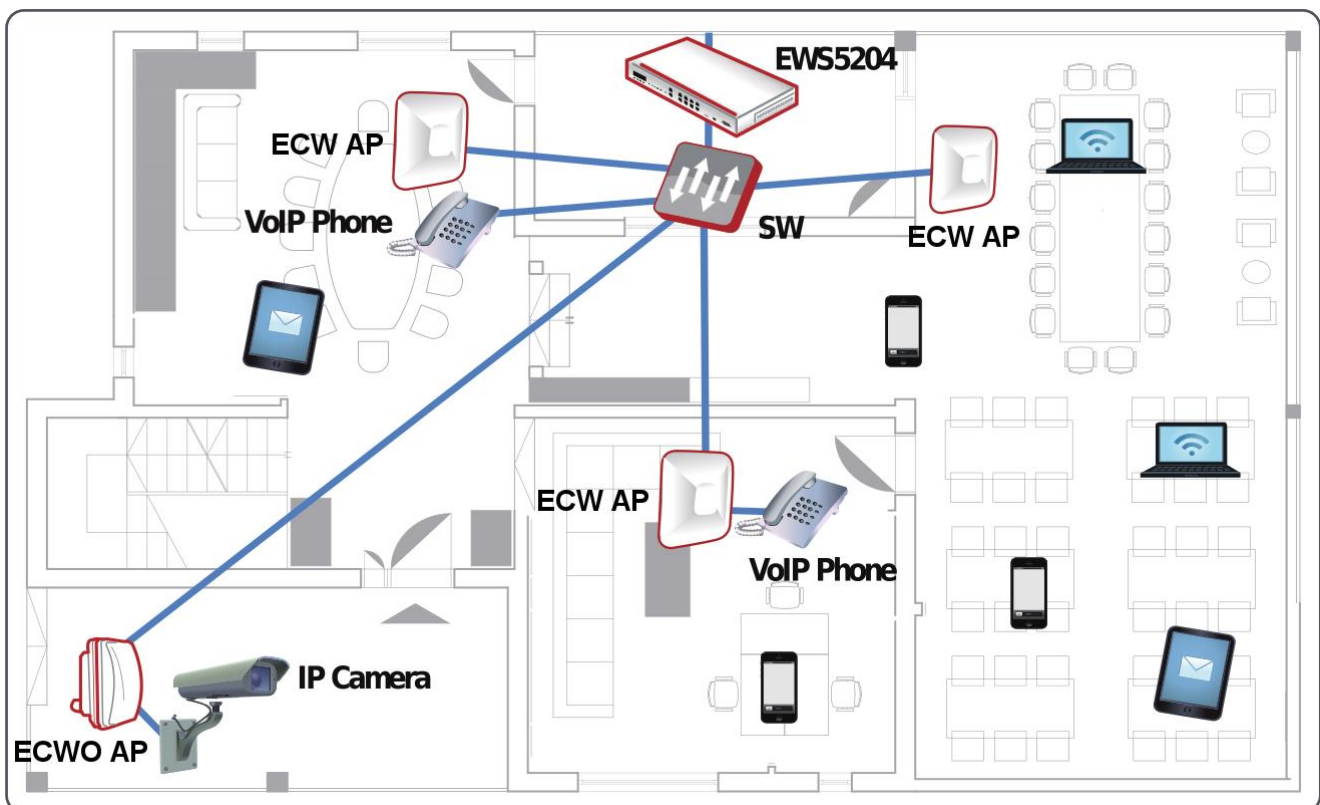
Please follow the steps below to install the EWS5204:

1. Attach the power cord to the power supply socket on the rear panel. The power LED should be on indicating a proper connection.
2. Connect a switch/router of an internal network to the WAN1 Port on the front panel via an Ethernet cable. The WAN1 LED should be on indicating a proper connection.
3. Connect an administrative PC to any LAN Port on the front panel via an Ethernet cable. The LED of this LAN port should be on indicating a proper connection.

Getting Started

< System Overview >

Edgecore EWS5204 is an enterprise-grade Wireless LAN Controller that supports user management, AP management, and other management functions. The following network diagram is a deployment example where the EWS5204 is able to centrally manage users and wireless access points at this site.



< Web Management Interface >

The EWS5204 has a web-based interface for configuration and management. Follow the steps below to access the Web Management Interface (WMI) for the first time.

1. Connect your administrative PC directly to a LAN port of the EWS5204 via an Ethernet cable. The PC should be assigned an IP Address in the same subnet as the EWS5204's (192.168.1.0/255.255.0.0).



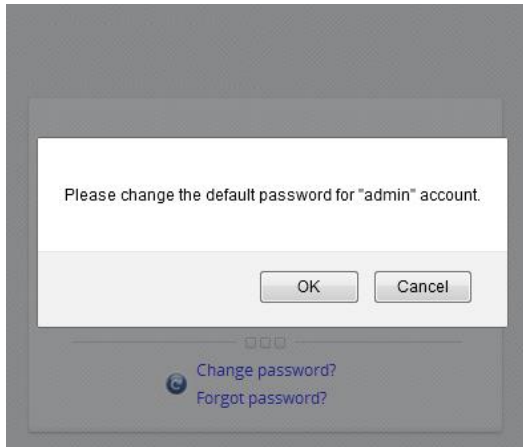
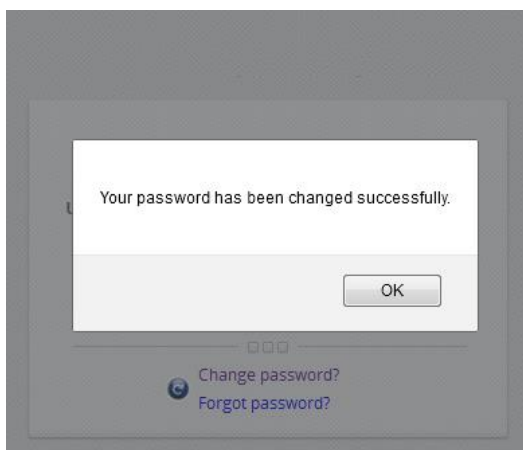
2. Launch the web browser and enter the IP Address of Default Service Zone (192.168.1.254) in the address field.



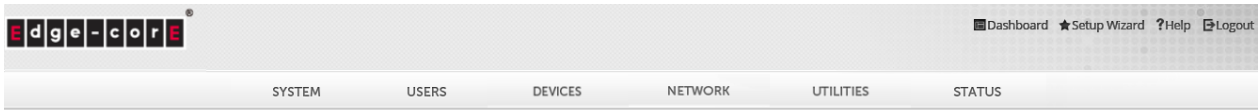
Log in using default Username (**admin**) and Password (**admin**) on the Administrator Login Page:

A screenshot of a login form titled "LOGIN". It features two input fields: "Username" with the text "admin" and "Password" with six dots. A "Log In" button is positioned to the right of the password field. Below the fields are two links: "Change password?" and "Forgot password?".

3. After a successful login, the system prompts for the administrator to change password for security reasons. The new password needs to be at least 6 characters long and include at least one alphabet and one number.

A screenshot of a form titled "Edit New Password". It contains four input fields: "Name" with "admin", "Original Password" with six dots, "New Password" with seven dots, and "Verify Password" with seven dots. Below the fields are two buttons: "Apply" and "Cancel".

4. Welcome to System Main Menu page will appear after a successful login with the new password.



Welcome to System Main Menu

This Administrative Web Interface allows you to set various networking parameters, to customize network services, to manage user accounts and to monitor user status.

Functions are separated into the following main categories:

[System](#), [Users](#), [Devices](#), [Network](#), [Utilities](#), and [Status](#).

For a quick overview of the system, please refer to the [Dashboard](#).

For shortcut links to the Dashboard, you may click the 4ipnet Logo on the top-left, or click the [Dashboard](#) icon on the top-right.

The [Star](#) icon on the top right is a [Setup Wizard](#) that provides a quick step-by-step guide on setting up your system.

For help with your system configuration, click the [?](#) icon for Online Help.



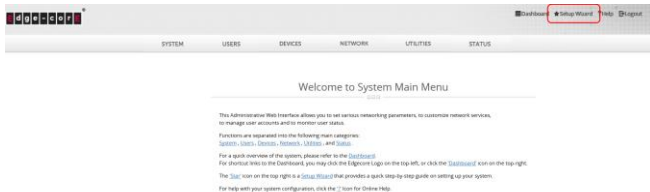
In some cases, you may need to access the WMI of the EWS5204 from its WAN side (i.e. using WAN IP address of the EWS5204). By default, this is not allowed for security reasons; in this situation, go to Management IP Address List (SYSTEM > General > Management IP Address List) and check 'Active' on the first entry (0.0.0.0/0.0.0.0), as shown in the screenshot below.

No.	Active	IP Address/Segment
1	<input checked="" type="checkbox"/>	0.0.0.0/0.0.0.0
2	<input type="checkbox"/>	
3	<input type="checkbox"/>	

Common Settings

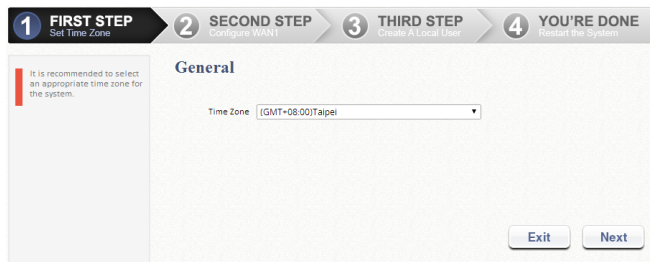
< Setup Wizard >

To quickly configure EWS5204, click on the **Setup Wizard** button on the top right corner to start the configuration process.



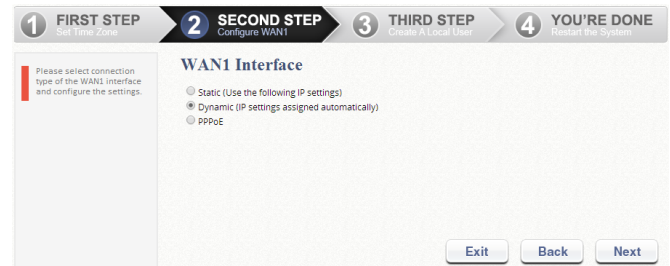
Step 1: General

- Select a time zone to set up the system time.
- Click **Next** to continue.



Step 2: WAN1 Interface

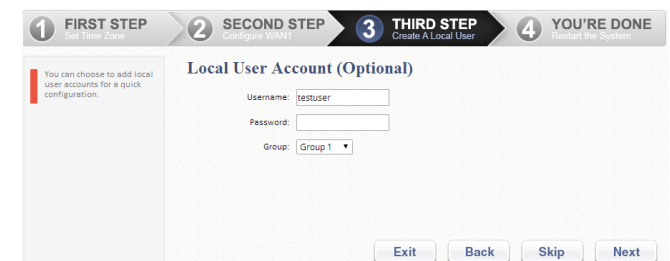
- Select a proper type of uplink connection for WAN1 interface: **Static**, **Dynamic**, or **PPPoE**.
- Click **Next** to continue.



Step 3: Local User Account (Optional Step)

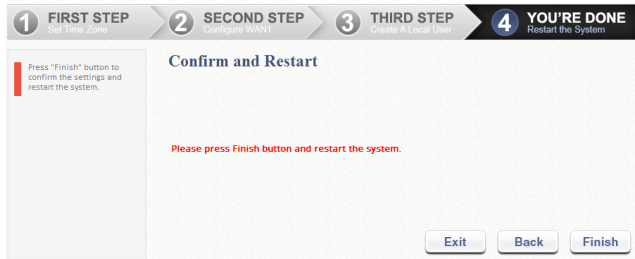
To verify the system's readiness upon completion of the Setup Wizard, a new local account can be created into the Local database. You can click **Skip** to go directly to Step 4.

- Enter the *Username* (e.g. "testuser") and *Password* (e.g. "testuser") to create a new local account.
- Click **Next** to continue.
- More local accounts can be added by clicking the **Back** button in Step 4.

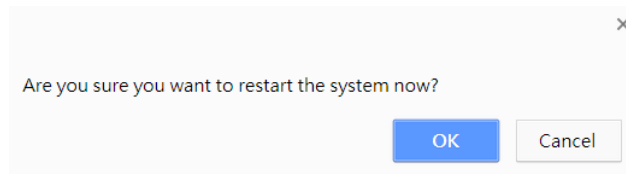


Step 4: Confirm and Restart

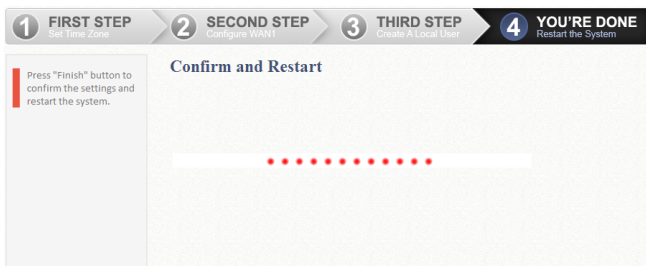
- Click **Finish** to save current settings and restart the system.



- A confirmation dialog box will then appear. Click **OK** to continue.

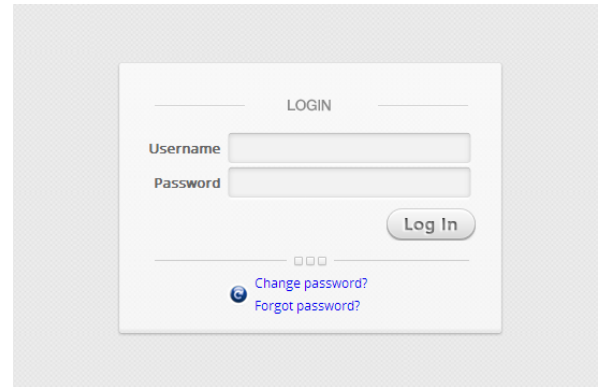


- A **Confirm and Restart** message will appear during the restarting process. Please do not interrupt the system until the Administrator Login Page appears.



►► **Note:** The system will try to reach a DNS server at this stage. Therefore, it may take a longer time if the configured DNS cannot be found.

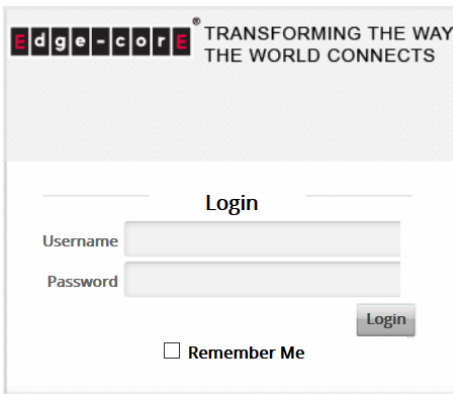
- The system restart process is completed when the following **Administrator Login Page** appears.



< User Login >

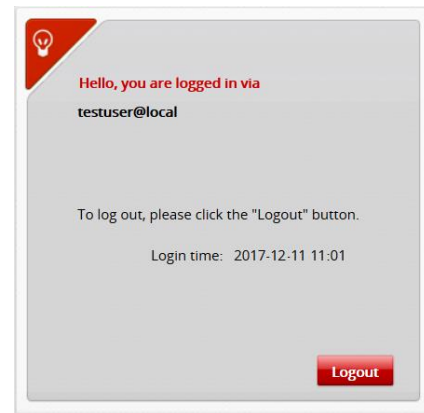
Follow the steps below to verify the basic configurations completed through **Setup Wizard**:

1. Connect a laptop PC to any LAN Port of the EWS5204. The PC will obtain an IP address automatically from the EWS5204.
2. Launch a web browser and enter any website URL. The default **User Login Page** will appear.



3. Enter the *Username* and *Password* of a local user account previously created via Setup Wizard (e.g. Username: *testuser* and Password: *testuser*); then Click **Login**.

The Login Success Page appears after the user is successfully authenticated by the system.



Well Done! The EWS5204 is now up and running with the basic configurations.

» Note:

1. EWS5204 supports multiple authentication server options including built-in local user database and external authentication servers.
2. The complete username format is **userid@postfix**, where the "postfix" string stands for the back-end authentication server. Therefore, match-up between username and back-end authentication server is based on the "postfix" string in the complete username.
3. Normally, users have to enter the complete username (e.g. **testuser@local**) during login. However, the postfix can be omitted when the postfix matches the default authentication server option. For example, LOCAL database is enabled as the default authentication option; therefore, in this case, you can simply enter **testuser** as the username to log in.